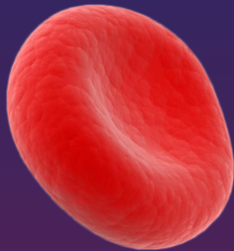


What is Sickle Cell?

Sickle Cell Disease (SCD) is a group of inherited red blood cell disorders.

Healthy red cells are round. Their job is to carry oxygen throughout the body.



Normal Red Cell

In people with SCD, the red blood cells are sickle shaped and become hard and sticky.



Sickle Cell

The sickle cells die sooner than normal healthy red cells would. This causes a constant shortage of red blood cells. When they flow through small blood vessels, they can get stuck and clog the vessel. This can cause pain and other serious problems such as infection, acute chest syndrome and stroke.

How does someone get Sickle Cell Disease?

SCD is a genetic condition that is present at birth. It is inherited when a child receives two sickle cell genes. One inherited from each parent. People who have one sickle cell gene and one normal gene have what is called **Sickle Cell Trait. (SCT)**

In a couple where both have SCT, the chances for passing on Sickle Cell Trait and Sickle Cell Disease are:



50% chance any child will have **Sickle Cell Trait**



25% chance any child will have **Sickle Cell Disease**



25% chance child will not have Sickle Cell Disease or Sickle Cell Trait.



Why is giving blood important for Sickle Cell Patients?

Ensuring the diversity and availability of the blood supply is essential to treating Sickle Cell patients. Many Sickle Cell patients require frequent blood transfusions sometimes even once or twice a month.

A+

A-

O+

O-

B+

B-

AB+

AB-

Many Sickle Cell patients require blood that must be matched more closely than just by the standard ABO types. The easiest way to find these matches is to find donors who match the patient's race or ethnicity. This is to reduce the risk of complications from their transfusions. That is why it is so important for people of every ethnicity to give blood.

Donating blood only takes about 30 minutes from start to finish and it will be used to help someone in your community.

For more information, to find a location near you, or to schedule an appointment:

Call 800.962.0628 or visit www.bloodassurance.org

Follow us:



visit bloodassurance.org/sickle-cell for more information.

